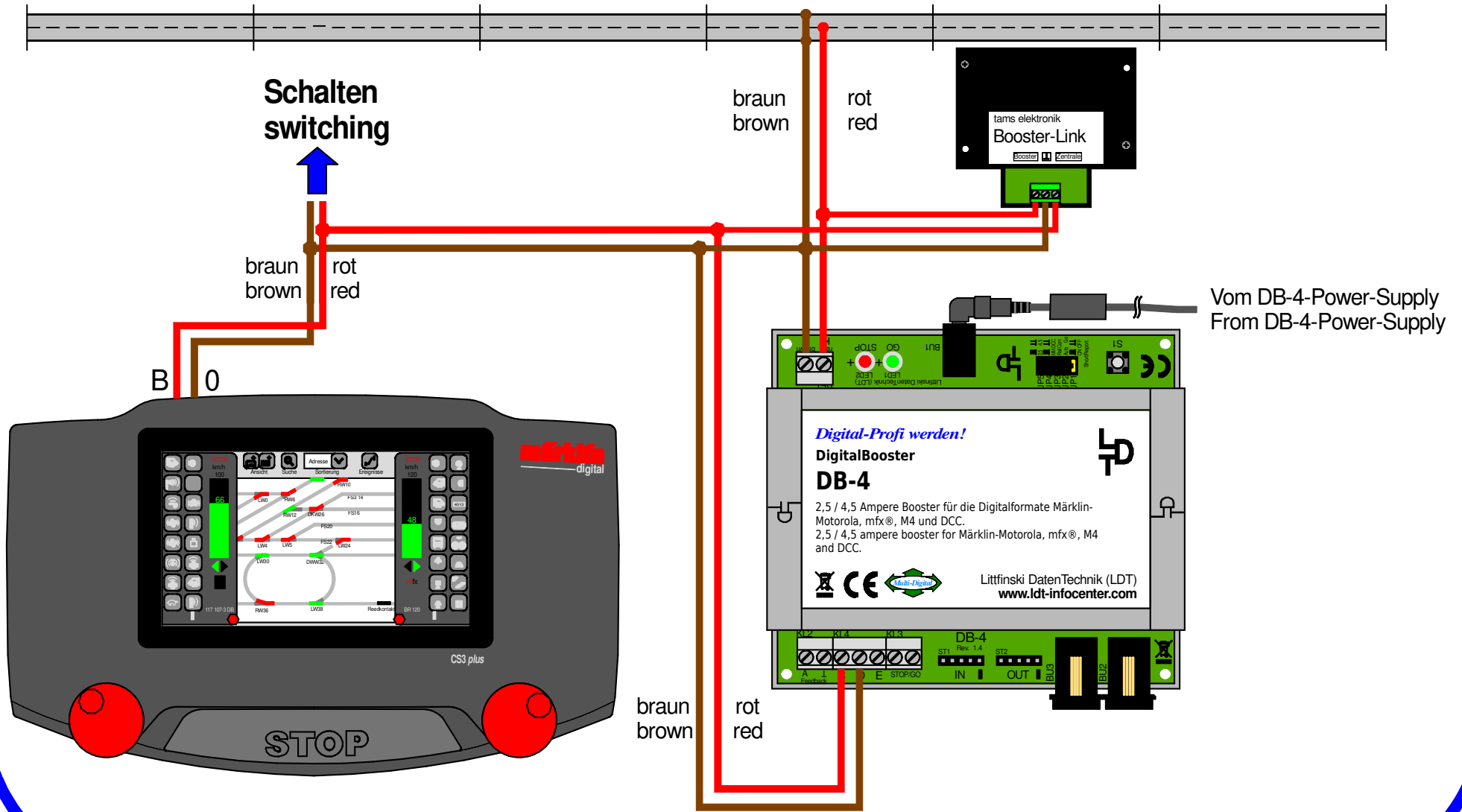


Central Station 3 plus und DigitalBooster DB-4 (3-Leiter Gleis): Booster-Link (Fa. Tams) integrieren
Central Station 3 plus and DigitalBooster DB-4 (3-rail conductor): Integrating Booster-Link (Fa. Tams)



Technische Änderungen und Irrtum vorbehalten.
 Subject to technical changes and errors.
 © 06/2020 by LDT

