

Operation Instruction:

INTER-10-Tool

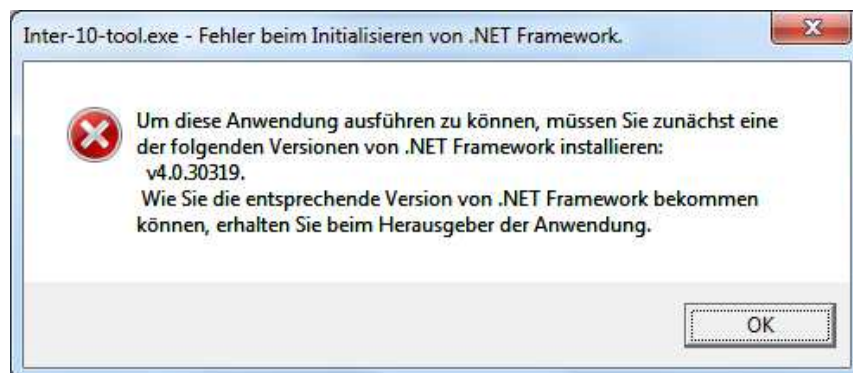
(Version 1.01)

With the Inter-10-Tool is it possible to check a transponder system consisting of the Interface INTER-10 and one or several Transponder Reader COL-10 independently from a model railway software.

1. Basic requirement: Microsoft .NET Framework:

To be able to start the Inter-10-Tool on your PC is it required that Microsoft .NET Framework with the minimum version 4 has been installed.

Is this software not available there will be the following error message:



For downloading and installation you can find Microsoft .NET Framework here: <https://www.microsoft.com/de-DE/download/details.aspx?id=17851>. Or you can search under www.microsoft.de for “NET Framework”.

2. Selecting the COM-Port:

During the program start will be at first the correct jumper setting at the INTER-10 indicated.



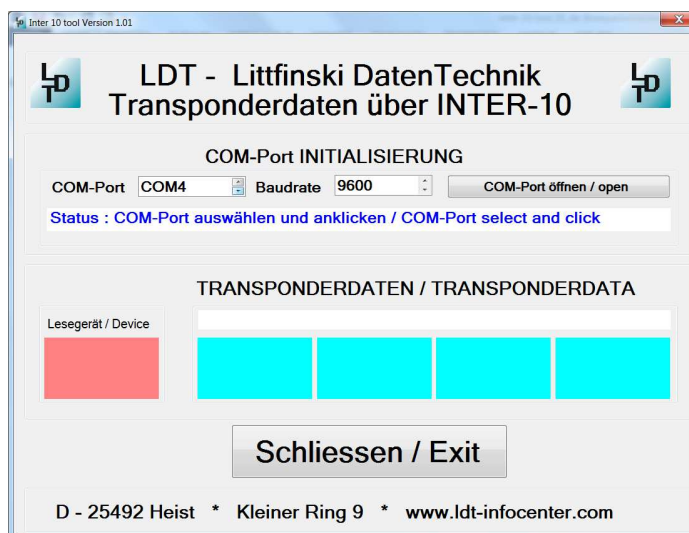


Littfinski DatenTechnik (LDT)

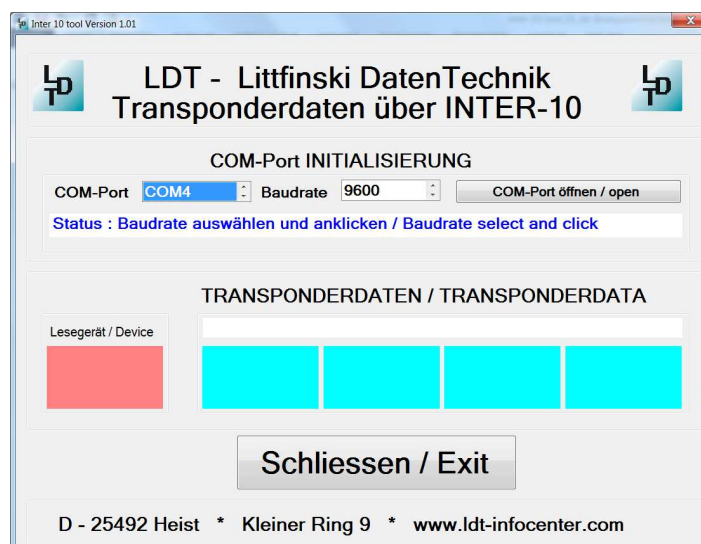
Bühler electronic GmbH • Ulmenstraße 43 • 15370 Fredersdorf / Germany • Phone: +49 (0) 33439 / 867-0

After program start please select at first with the two arrow keys the COM-Port onto which the INTER-10 has been connected.

For selection are only the actual COM-ports on the PC available. This can be as well virtual COM-Ports which are created via an “USB inter-series adapter”. For the common function with the transponder interface INTER-10 is the adapter DA-70156 of company Digitus suitable.



Click now on the selected COM-Port and the field will get a blue background.



3. Baud rate (transfer rate) selection:

Select now with one of the arrow-keys the Baud-rate and click onto the selected Baud-rate. For the possible selection of 9600 and 19200 Baud there will open a window with the indication of the correct setting of the jumper 1 at the INTER-10.

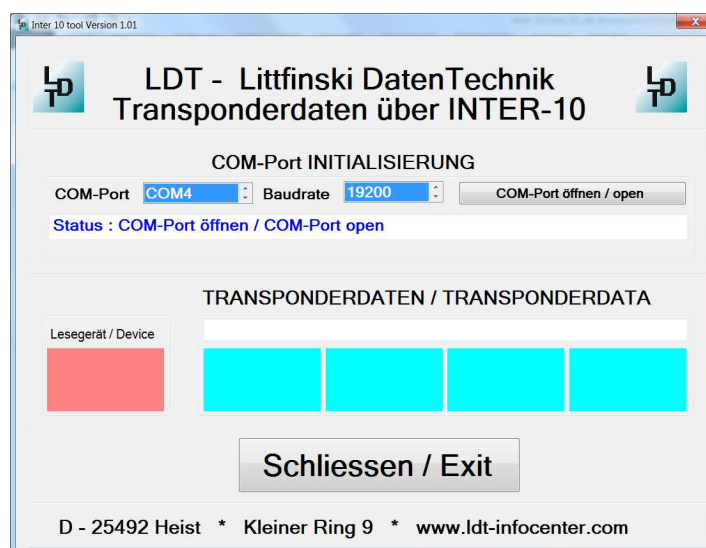
For 9600 Baud this jumper has to be pulled out (opened)



and for 19200 Baud inserted (closed).

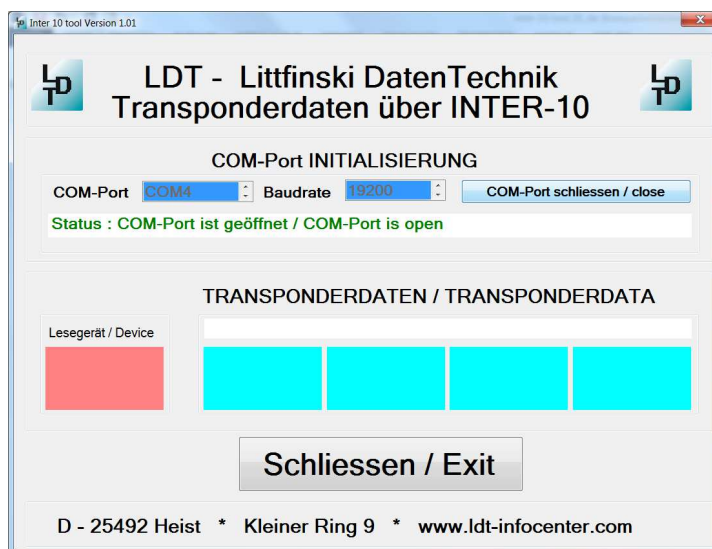


Following the Baud rate will get a blue background as well.

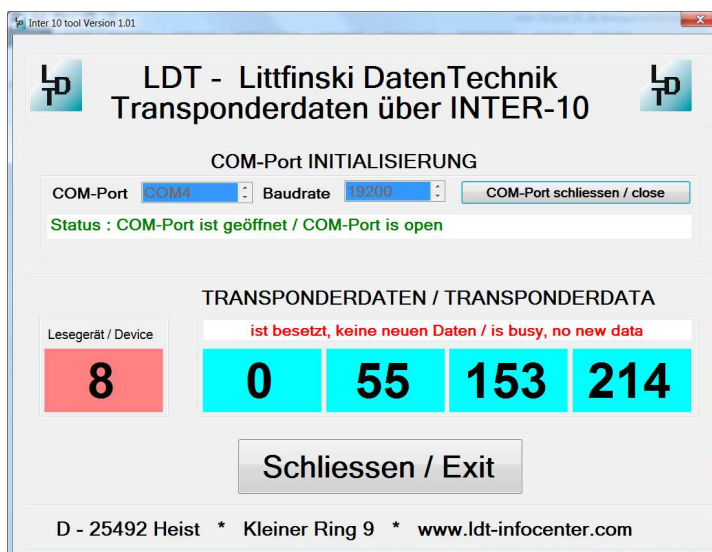


4. Establish the connection to the INTER-10 and indicate the Transponder data:

Click on the switch field “COM-Port /open” and the connection to the INTER-10 will be established.



As soon as a Transponder will be recognized by the reader COL-10 within the range of the antenna the transponder data will be indicated. Additionally there will be on the very left the number of the reader indicated which reader supplied these data.

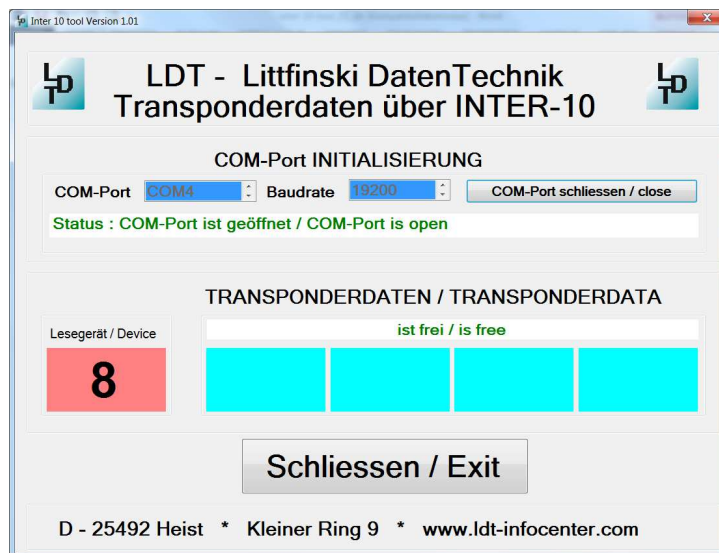




Littfinski DatenTechnik (LDT)

Bühler electronic GmbH • Ulmenstraße 43 • 15370 Fredersdorf / Germany • Phone: +49 (0) 33439 / 867-0

If the Transponder is leaving the reading area a message shows “is free”.



On this way is it possible the check all reader devices COL-10 within the Transponder system.

Made in Europe by
Littfinski DatenTechnik (LDT)
Bühler electronic GmbH
Ulmenstraße 43
15370 Fredersdorf / Germany
Phone: +49 (0) 33439 / 867-0
Internet: www.ldt-infocenter.com

Subject to technical changes and errors.
© 08/2019 by LDT