



2. Lightsignal-Decoder LS-DEC-SNCF:

For up to 4 light signals of the French State Railway Company SNCF



With the **Lightsignal-Decoder LS-DEC-SNCF** is it possible to switch SNCF light signal aspects via accessory addresses.

With each **Lightsignal-Decoder LS-DEC-SNCF** can be either **four 2- to 4-aspect-** or **two up to 16-aspect signals** connected and controlled.

The **light emitting diodes (LED)** from the **signals** will flash **realistic** during the relevant aspects.

The **signal aspects** will not simply be cross faded but as in reality the prior aspect will be

firstly dimmed-down and after a short **dark phase** the new signal aspect will appear. The light emitting diodes will be **dimmed up and down** during this process.

The **Lightsignal-Decoder LS-DEC-SNCF** is suitable for all **LED-assembled SNCF-light signals** with **common anode** or **common cathode**.

Via a **jumper** is it possible to select the data format **Märklin-Motorola** or **DCC**.

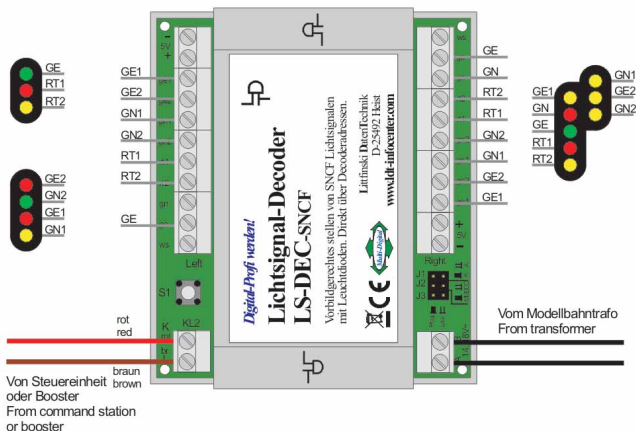
The **operation current** and the **signal current for the decoder** need not to come from the **digital current circuit** but can be supplied by a **separate supply input** directly from a **model railway transformer**. This will safe expensive digital current.

Order code:

LS-DEC-SNCF-B (Part-No. 510411): Light Signal-Decoder LS-DEC-SNCF as kit.

LS-DEC-SNCF-F (Part-No. 510412): Light Signal-Decoder LS-DEC-SNCF as finished module.

LS-DEC-SNCF-G (Part-No. 510413): Light Signal-Decoder LS-DEC-SNCF as finished module in a case.



© 2015 by LDT/ Subject to technical changes and errors.

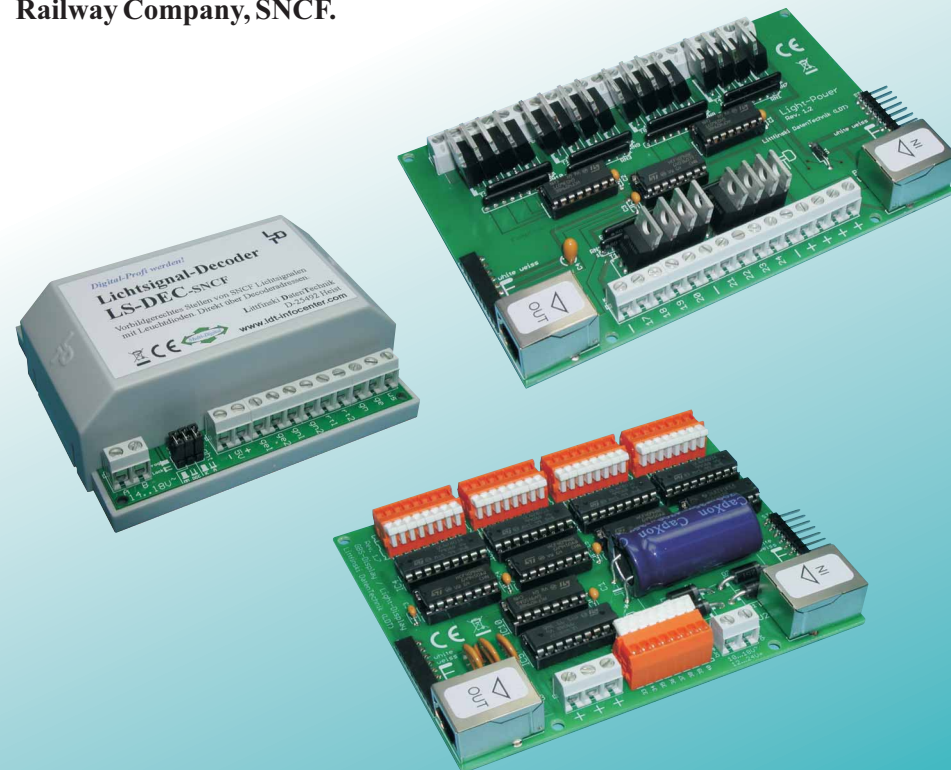


Components for control, switching and feedback reports for digital model railways!

Be a Digital-Professional! Novelties 2015

1. **Light@Night**: the Module **Light-Display** and **Light-Power** are now extended by **RJ-45 sockets** for the layout light control and the module can now be installed at greater distances with an interference protected patch-cable.

2. **LS-DEC-SNCF**: **Lightsignal-Decoder** for light signals of the French State Railway Company, SNCF.



Low cost kits, finished module and finished module in a case

Littfinski DatenTechnik - LDT

Kleiner Ring 9 • D-25492 Heist/Germany • Phone: 0049 4122/977381 • Fax: 0049 4122/977382

www.ldt-infocenter.com



Light@Night

Extension with RJ-45 sockets of the Module Light-Display and Light-Power for the layout light control to enable installation at greater distances with an interference protected patch cable.



The **PC-Light Control Light@Night** is the perfect solution for the control of **Layout- and Ambient Room-light effects** of your **analog or digital model railway**. The **PC-Light Control** has been developed as a **modular system**. This allows an **optimal matching** to any **layout size** and any **individual requirement** at low cost. Besides the **Layout- and Ambient Room-light control** offers **Light@Night** the possibility to **release spontaneous various effects** at the layout via **64 push buttons**. Additionally is a **weather simulation** including a **3D-sound** possible.

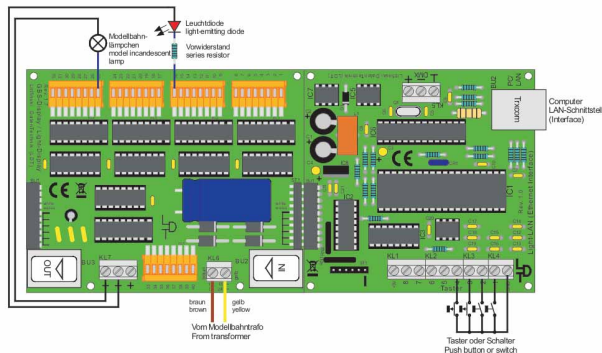
Hardware extension for the layout light control:

The **Light@Night** hardware of the layout light control consists of one **Light-Interface LI-LAN or LI-LPT** for the **network(LAN)- or parallel(LPT)-interface** of a **PC** and **minimum** of one **Light-Display- or one Light-Power-Module**, which has to be connected to one of the **Light-Interfaces**.

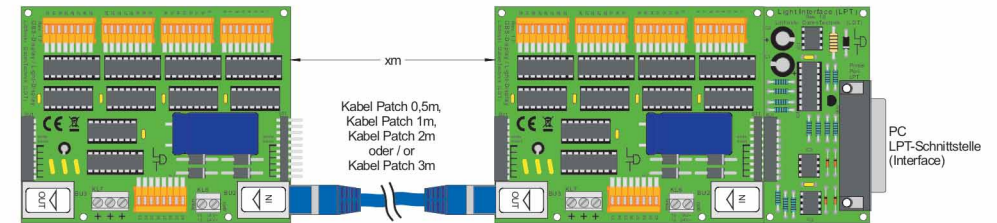
The **Light-Display-Module** has **40 outputs** with a possible **max. load of 0.5 Ampere** each. Therefore is **Light-Display-Module** especially suitable for the control of **single incandescent lamps or light emitting diodes**.

A **Light-Power-Module** has **24 outputs** with up to **2.5 Ampere** each. This is the best selection if there shall be simultaneously **many incandescent lamps switched** (e.g. **complete street or train station illumination**).

Up to 7 Light-Module (Light-Display or e.g. Light-Power) can be connected to a **Light-Interface** and combined as **required**. Therefore are between **168 and 280 light outputs** for the layout light control available.



Several **Light-Module** will be **directly connected to each other**. If the **Light-Module** of the **PC-light control Light@Night** shall be assembled at a greater distance to be closer to the light sources in the past the **Kabel Light@Night** with the length of **0.5m, 1m and 2m** has been used. For covering in future **greater distances free from interferences** the **light module** are now **equipped with RJ-45 sockets**. Now is it possible to use **screened interference protected Patch-Cable** (computer network cable) to connect various module.



The **Light@Night PC-Software** can as well be used together with a **model railway control-software** on your PC. Which model railway software you will use (e.g. **Railware, TrainController, WinDigipet or iTrain**) **does not matter** because the **PC-light control Light@Night works independently** from the model railway software in the **background**. For an immediate start of the **Light-Interface LI-LPT** (suitable for Windows 32-Bit operation systems) the unit will be supplied together with a **connection cable** (length 1,8m) for the **parallel interface** as well as the **demonstration version 1.0** of the **Light@Night PC-Software**.

For an immediate start of the **Light-Interface LI-LAN** (suitable for Windows 32- and 64-Bit operation systems) the unit will be supplied together with a **connection cable** (length 2m) for the **Network-Interface** as well as the **demonstration version 3.0** of the **Light@Night PC-Software**.

The free of charge supplied **demonstration version** has the following **limitation** against the **complete version**:

For the **light effects** at the single outputs are **only "light on/light off" and "flashlight" available**. The **remote control** of the **layout lights via push buttons**, the **ambient light control** and the **weather simulation incl. 3D-sound is not possible**. For those functions is the **complete version 3.0 required**.

Order code:

- LI-LPT-B (Part-No. 050601):** Light-Interface for the Parallel-Interface (LPT) as **kit**.
- LI-LPT-F (Part-No. 050602):** Light-Interface for the Parallel-Interface (LPT) as **finished module**.
- LI-LAN-B (Part-No. 050701):** Light-Interface for the Network-Interface (LAN) as **kit**.
- LI-LAN-F (Part-No. 050702):** Light-Interface for the Network-Interface (LAN) as **finished module**.
- Light-Display-B (Part-No. 050031):** Light-Display with 40 light outputs with 0,5A each as **kit**.
- Light-Display-F (Part-No. 050032):** Light-Display with 40 light outputs with 0,5A each as **finished module**.
- Light-Power-B (Part-No. 050061):** Light-Power with 24 light outputs with 2,5A each as **kit**.
- Light-Power-F (Part-No. 050062):** Light-Power with 24 light outputs with 2,5A each as **finished module**.

The complete version of the **PC-Software** for the light control **Light@Night** incl. **manual** is available by the company **Railware** (www.light-at-night.com).